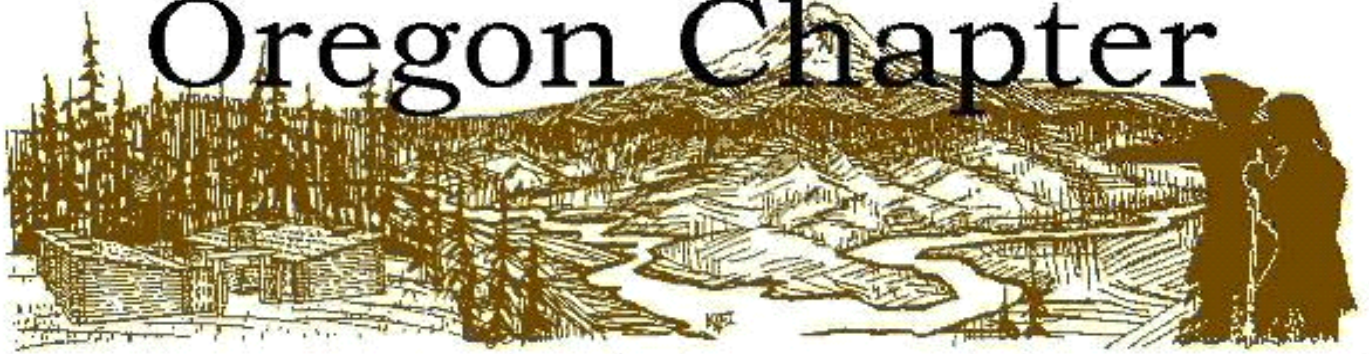


Oregon Chapter



Lewis and Clark Trail Heritage Foundation

September 2007

- **President's Corner:**
Larry McClure
- **Oregon Garden 10/14**
- **Visit the website**
www.or-lcthf.org
- **Confluence Project**
wins Youth Award
- **Chapter Name Badges**

Inside this issue:

Chapter Activities	2
Ghosts of Celilo Debuts in Portland	2
2007 Chapter Events- Save These Dates	2
Inventory Project	3
Chapter Board	3
From the Member- ship Secretary	3
December 9 Banquet L&C Archaeology	4

President's Corner



Ellie and I were glad we decided to attend the 2007 annual meeting of the Foundation in Charlottesville, Virginia in early August.

Our biggest problem was trying to take pictures of Bud Clark and his living history team which had set up camp in

a grassy area on the hotel grounds. It was so hot and humid that our 5th-floor windows were sweating on the *outside* with no way to wipe away the moisture. Our trips to Monticello and other historic sites, plus interesting speakers, reminded us again of the creative genius of Jefferson and the

(Continued on page 3)

Oregon Garden Tour — October 14: Featuring L&C Flora

Chapter member and horticulturalist **Wilbur Bluhm** will lead us on a tour of the Oregon Garden's **Lewis & Clark showcase** on Sunday, October 14 at 2 p.m.

To get the full experience of this local treasure (in Silverton), come earlier that day to see the fall colors and the ever-changing displays. The Garden opens at 10 a.m.

Wilbur, a retired extension agent and former head of the Oregon State University Extension

Office in Salem, will meet us at 2 p.m. at the Education Building near the main entrance.

His professional career focused on area nursery



and greenhouse growers, and the native flora of Oregon are his continuing avocation.

Lewis & Clark conducted some of their most detailed botanical work along the Colum-

bia River and while camped at Fort Clatsop.

Admission to the Garden is \$8 for adults and \$7 for seniors (60+). See www.oregongarden.org for directions and details.

The Garden's horticulturalist has invited the Chapter to consider purchasing several plants needed to replace specimens in the Lewis & Clark Collection.

If you are interested in adopting a plant, contact **Mike Carrick** or **Larry McClure**.





Isaac Anderson enjoys the Chapter's May 12 Wildflower Hike in the Columbia Gorge.

Visit www.DestinationThePacific.com for more information about L&C-related efforts at the mouth of the Columbia.



The Trail Band

Oregon Chapter Name Badges

Send \$10 and your name (as you want it to appear) to **Dick Hohnbaum**, 6916 Wheatland Lane N., Keizer, OR 97303



CHAPTER ACTIVITIES

EXPLORE MORE!

Thelma Hagenmiller and **Lyn Trainer** have launched **Explore More!**, a series of chapter trips which will include a Lewis & Clark connection but also help members learn about other historical and cultural events that happened since that time.

They have posted an on-line survey for members to help choose the best trips. Visit <http://or-lcthf.org/Surveys/ExploreMore.html> to complete the survey by **November 30**.



The Ghosts of Celilo Debuts in Portland

Ten years in the making, *The Ghosts of Celilo* will appear in Portland's Newmark Theatre **Sept. 27 thru Oct. 14th**. Artists Repertory Theatre will present this compelling new historical musical with six members of the Trail Band as the "orchestra". Marv Ross wrote it with Thomas Morning Owl, Arlie Neskahi, and Chenoa Egawa—three Native American singer/writers, with help from Tom

Hampson from ONA-BEN. They interviewed many people on the river (native and non-native) about their memories of Celilo Falls; one goal was to mix traditional musical theatre genres with NW Native American music.

Celilo Falls played an important part in the Lewis & Clark story, and chapter members have followed the progress of this work as it has developed. Many will recog-

YORK STATUE

Lewis & Clark College is part-way through raising \$120,000 for a statue of York on the campus, an effort spearheaded by Charles Neal, an African American law student at the college. For more information, contact **Doug Erickson** (dme@lclark.edu).

nize Chenoa Egawa as the young actress who played the title role of Sacagawea in the 2003 Oregon Children's Theatre musical, for which Marv Ross wrote the music.

Tickets are available through both Ticketmaster and the PCPA Box Office at 1111 S.W. Broadway in downtown Portland.

www.ghostsofcelilo.com



2007 Chapter Events — Save These Dates!

Sept. 27—Oct. 14 Ghosts of Celilo (see above)

October 14 Oregon Garden Tour (see p. 1)

December 9 Annual Holiday Dinner at Lewis & Clark College: Archaeology Theme (see p. 3)

Visit our website for more details, and contact **Larry McClure** with ideas or offers to help!

SIGN UP FOR THE INVENTORY PROJECT

Our chapter is collecting information on over 100 Oregon L&C sites, centers, collections, artwork, trails, and other related locations. Through on-site visits, Chapter volunteers are completing a comprehensive data sheet and providing images, text, and observations about site conditions.

The effort launched on June 16; we hope to complete it by the end of Summer 2008.

This is YOUR opportunity to choose a site or two to visit, document, and help preserve. Please visit the chapter website for full information about the project and to sign up for your sites!

<http://or-lcthf.org/Projects/Inventory.html>

Ted Kaye is leading this project. Contact him for details: (tedk2005@aol.com; 503-223-4660).



Chapter Board

Officers:

Larry McClure, President '07
Doug Erickson, Vice President '08
Ted Kaye, Secretary '07
Dick Hohnbaum, Treasurer '08

Directors:

Mike Carrick '08, Gentry Cutsforth '09, Don Eppenbach '07, Keith Hay '07, Mark Johnson '08, Glen Kirkpatrick '09, Ellie McClure '08, Lyn Trainer '07, Roger Wendlick '09

Ex Officio: Ken Karsmizki

Please contact **Larry McClure** if you have interest in serving on the Chapter's board or committees.

www.or-lcthf.org

There is far more L&C information available on our website!

Please check it for the latest updates on Chapter activities.

We'll be sending fewer postcards, so watch the website for updates!

President's Corner ... continued

(Continued from page 1)

fortitude of his Corps of Discovery. We traveled with our two grandsons from Atlanta who were kept busy with Camp Pomp while we were in the two days of sessions. Their reaction? "Can we go to Great Falls next summer?" Wow, this is

the spirit we hope to see in a new generation of Lewis and Clark enthusiasts! Coming up in 2009, the Foundation will hold its annual meeting in late September on the Natchez Trace (Mississippi and Tennessee) to mark the 200th anniversary of Meriwether Lewis's demise. In 2010, the annual meeting

once again comes our way to Lewiston, Idaho. As we saw for ourselves when we hosted the 2005 meeting here in Portland, annual meetings of the Foundation are both fun and informative. Ellie and I hope you will join us on a trek to Great Falls next August.



From the Membership Secretary – Renew Now!

If your membership in our Chapter has lapsed, you're probably not reading this. Please "re-enlist"!

Please renew your membership: \$10 individual, \$16 family.

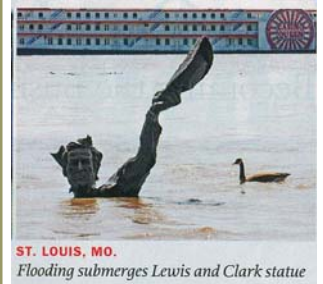
If you are uncertain about your membership status, or simply want to renew for one or more years, contact the Membership Secretary.

The membership year is now January–December.

Glen Kirkpatrick

32523 S. Wright Road,
Molalla, OR 97038

glenkirkpatrick1@juno.com



ST. LOUIS, MO.
Flooding submerges Lewis and Clark statue

Confluence Project Wins Foundation Youth Award

The education component of the Confluence Project, nominated by our chapter, **won** the national LCTHF youth award! (See the May newsletter for details.)

For the DVD about Fairview Elementary School's public art project, contact **Larry McClure**.

larry.mcclure@gmail.com



Lewis & Clark Trail Heritage Foundation

6916 Wheatland Lane N.
Keizer, Oregon 97303

www.or-lcthf.org

December 9 Banquet at Lewis & Clark College Will Feature Archeologist Working on Downriver Sites

Our annual chapter gathering will again be held at Gordon Smith Hall on the Lewis & Clark College campus, this year on Sunday evening, **December 9**. An informal social time will begin at 5 with dinner at 6. The tasty buffet will be \$25. Keith Hay will arrange his usual fine choices of Oregon wines. Other beverages and appetizers may include some authentic tastes from the Trail.

Bob Cromwell, archaeologist at Fort Vancouver National Historic Site, is one of two researchers who are responsible for archeological work at the new Lewis & Clark National Park sites on the lower Columbia and the coast. Bob will give us an update of his and chief archeologist Doug Wilson's activities at Fort Clatsop, Station Camp, and other locations.

Please make reservations by **December 5** with **Dick Hohnbaum** (6916 Wheatland Lane N., Keizer, OR 97303; hohnbaum@aol.com; 503-390-2886)—phone & e-mail reservations pay at the door.

Chapter president Larry McClure will review activities in 2007, a short DVD of Fairview (Oregon) Elementary School's bicentennial art projects will be shown, and other members will

report out on current projects, such as the Inventory, our Explore More! program, and the York sculpture project.

A silent auction will help defray costs of the evening and ongoing Chapter projects. Your surplus books and artifacts could be someone else's treasure!

